

Jukes & Co

Estate Agents



Balfour Road

, London, SE25 5JY

£285,000



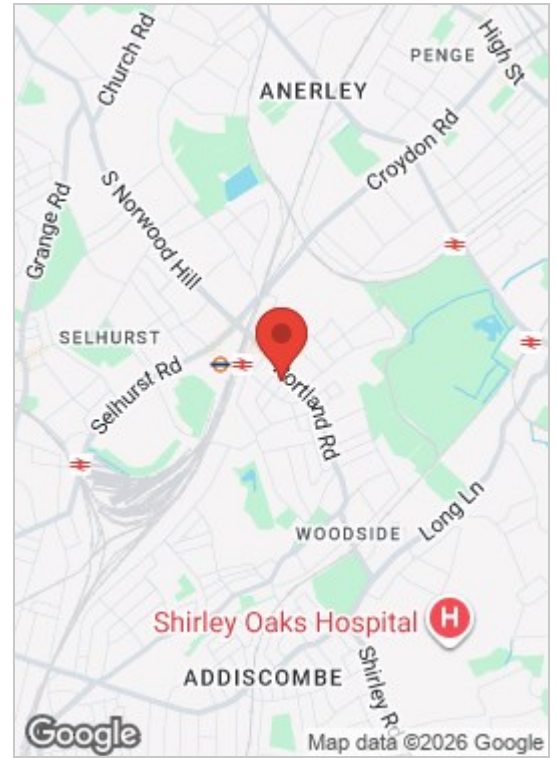
Nestled in the heart of SE25, this charming two-bedroom first-floor maisonette on Balfour Road offers a perfect blend of comfort and convenience. The property boasts its own front door, ensuring privacy and a welcoming sense of independence. Step inside to discover a large, well-appointed kitchen, ideal for culinary enthusiasts and family gatherings, alongside a generously sized lounge that provides a bright and spacious area for relaxation and entertainment.

The two well-proportioned bedrooms offer ample living space, making this maisonette suitable for families, couples, or professionals seeking a comfortable living environment. The property features a modern bathroom with contemporary fixtures, adding to the overall appeal and functionality of the home. Natural light floods the interior, creating a warm and inviting atmosphere throughout.

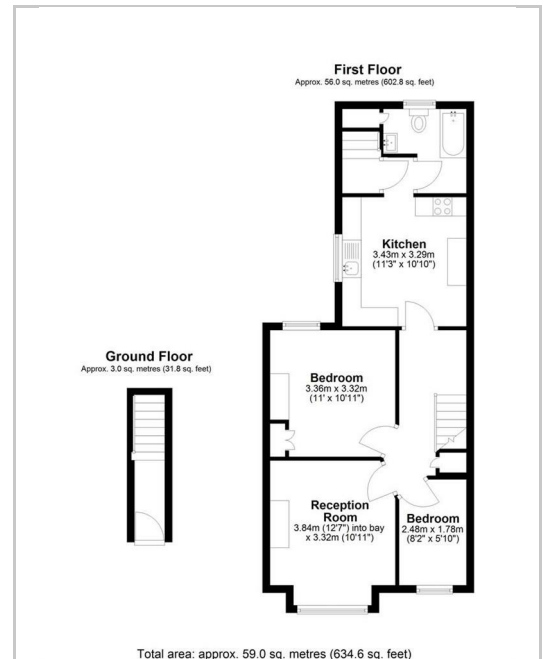
One of the standout features of this property is its own private garden, a rare find that offers a peaceful outdoor retreat. Perfect for gardening, outdoor dining, or simply unwinding in the fresh air, this garden enhances the appeal of this maisonette. Situated on Balfour Road, the property enjoys easy access to local amenities, schools, parks, and public transportation, making it an ideal choice for those looking to enjoy both the tranquility of a private home and the convenience of city living.



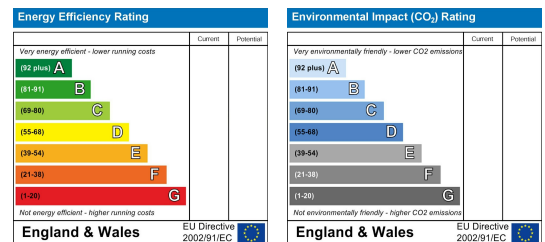
Area Map



Floor Plan



Energy Efficiency Graph



These particulars, whilst believed to be accurate are set out as a general outline only for guidance and do not constitute any part of an offer or contract. Intending purchasers should not rely on them as statements of representation of fact, but must satisfy themselves by inspection or otherwise as to their accuracy. No person in this firm's employment has the authority to make or give any representation or warranty in respect of the property.

Sales and Lettings

76 High Street, South Norwood, London SE25 6EB

T: 020 8653 9393 · F: 020 8771 5551 · E: sales@jukesestateagents.com · E: lettings@jukesestateagents.com

W: jukesestateagents.com